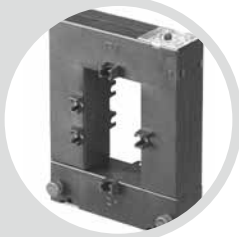
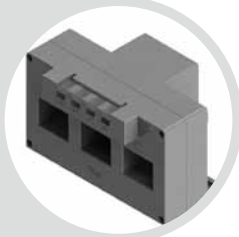


계기용 변성기

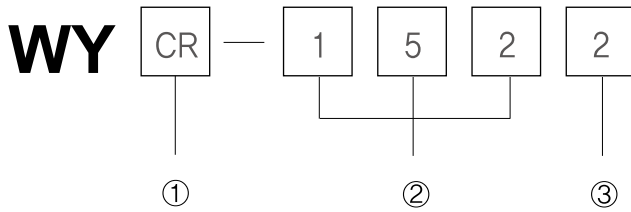
Current & Voltage Transformer



관통형 변류기(CT) Round type Current Transformer	85
권선형 변류기(CT) Winding type Current Transformer	87
부스바용 변류기(CT) Busbar type Current Transformer	89
3Ø 일체형 변류기(CT) 3Ø Current Transformer	94
분할 변류기(CT) Split type Current Transformer	95
변압기(VT) Voltage Transformer	96
3Ø 일체형 변압기(VT) 3Ø Voltage Transformer	99

KS C IEC60044-1(2003)

● Type Information



① Kind

CR	Round type (환형)
CS	Square type (각형)
3CS	3상 조합형 CT (3 Phase Type)
CB	Busbar & winding type (권선형)
CW	Winding Terminal type (권선형)
SC	Split type (분할형)

② Burden & Size

15	5~30(A)	Current	CW
151	5~150(A)		CB
152	200~300(A)		
153	400~500(A)		
15, 30, 40, 60	15, 30, 40, 60∅	Inside Dia	CR
16, 26, 31	16x14, 26x21, 31x24(mm)		3CS
32, 42, 45 44, 65, 85, 104 105, 130, 160 135, 137, 165, 167	32~160(mm)		CS
23, 58, 88, 812, 816	23~816		SC

③ Type

None	Single Ratio Type
D	Double Ratio Type
R	Protection Relay Type

④ CT(VA)에대한 필요 전선 길이

CT 2차 전선굵기 (mm ²)	CT 용량(VA)에대한 필요 전선 길이							
	CT 2차 / 5A에대한 용량(VA)							
	1m	2m	4m	6m	8m	10m	15m	20m
2×0.5	1,837	3,67	7,35	11,02	-	-	-	-
2×0.75	1,235	2,47	4,94	7,41	9,88	-	-	-
2×1.0	0,918	1,84	3,67	5,51	7,34	9,18	-	-
2×1.5	0,613	1,23	2,45	3,68	4,90	6,13	9,20	-
2×2.5	0,368	0,74	1,47	2,21	2,94	3,68	5,52	7,36
2×4.0	0,233	0,47	0,93	1,40	1,86	2,33	3,50	4,66
2×6.0	0,149	0,30	0,60	0,89	1,19	1,49	2,23	2,98

● General Specification

- Operating Temperature -10°C 55°C(With noicing)
- Humidity 80% RH
- 계기용 및 계전기용 Metering or relay
- 옥내형 Indoor type
- Color: Brown
- SC Type Color: Black



CR (환형)



CB (권선형)



3CS (3상 조합형)



CS (각형-미터용)



SC (분할형)
for Meter

ROUND TYPE (환형) CURRENT TRANSFORMER



계기용변성기

0.72~1.2kV (50~1500A)



KSC IEC 60044-1(2003)



CR

Din-Rail

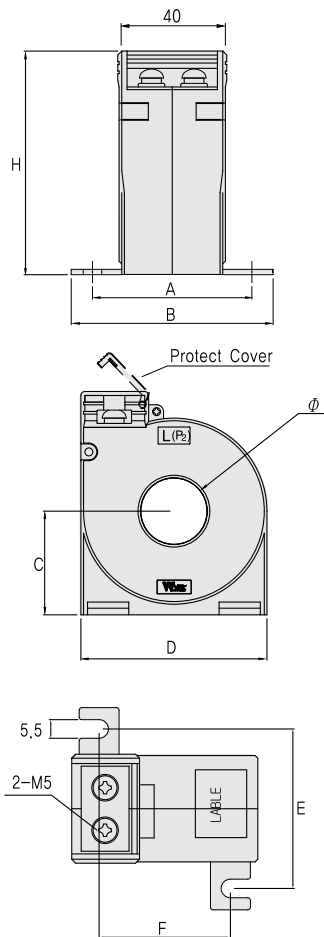
● Specifications

- Ring type C.T
- Maximum voltage : 0.72~1.2kV
- Over current strength : 40In/1sec.
- Frequency : 50Hz or 60Hz

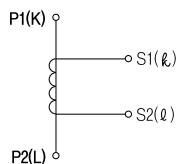
● Features

- Protect cover
- Easy to install panel mounting kit
- DIN rail mounting for ease of installation

● Illustration & Drawing



● Connection Diagram



● Single Ratio Type

Model	Primary (A)	Secondary (A)	Burden (VA)	Class (%)	Weight (kg)	Hole size (Ø)	
WYCR-15	50	5 or 1	2.5	1.0	≒0.5	15	
	60						
	75		5		≒0.6		
	100						
	150						
200							
WYCR-30	50~75		2.5	3.0	≒0.4		30
	100		5, 2.5	3.0			
	120			1.0			
	150		5, 15	1.0			
	200						
300							
WYCR-40	240	5	1.0	≒0.3	40		
	250	5, 15					
	300						
	400						
	500						
600							
WYCR-60	100~400	5, 15	1.0	≒1	60		
	500						
	600						
	800						
	1000						
	1200						
	1500						

● Dimension

Model	A	B	C	D	E	F	H
WYCR-15, 30, 40	60	76	39	70	60	50	84
WYCR-60	60	76	57	114	60	80	112

(mm)

트랜스포머

노이즈컷트랜스

무선접점릴레이

전력조정기

스위칭파워

노이즈필터

고조파필터

서지보호기

보호계전기

누전경보기

차량계전기

영상변류기

지시전기계기

계기용변성기

FAN

ROUND TYPE (환형) CURRENT TRANSFORMER

0.72~1.2kW (50~1500A)



● Primary Turns

Model	WYCR-15				WYCR-30						WYCR-40				WYCR-60							
Class	1.0%				3.0%		1.0%				1.0%				1.0%							
Burden	2.5VA		5VA		5VA		5VA		15VA		5VA		15VA		40VA		5VA		15VA		40VA	
A/T Pri.	A/T Tur.		A/T Tur.		A/T Tur.		A/T Tur.		A/T Tur.		A/T Tur.		A/T Tur.		A/T Tur.		A/T Tur.		A/T Tur.		A/T Tur.	
	5A	50	10	75	15	100	20	100	20	-	-	100	20									
10A	50	5	80	8	100	10	100	10	-	-	100	10										
15A	60	4	75	5	120	8	120	8	240	16	120	8	240	16								
20A	60	3	80	4	100	5	100	5	200	10	100	5	200	10								
25A	50	2	75	3	100	4	100	4	200	8	100	4	200	8								
30A	60	2	120	4	120	4	120	4	240	8	120	4	240	8								
40A	-	-	80	2	120	3	120	3	200	5	120	3	200	5	400	10						
50A	50	1	100	2	100	2	100	2	200	4	100	2	200	4	400	8						
60A	60	1	120	2	120	2	120	2	240	4	120	2	240	4	480	8						
75A	-	-	75	1	150	2	150	2	225	3	150	2	225	3	450	6						
80A	-	-	80	1	240	3	240	3	240	3	240	3	240	3	400	5						
100A	-	-	100	1	100	1	100	1	200	2	100	1	200	2	400	4	100	1				
120A	-	-	120	1	100	1	100	1	240	2	120	1	240	2	480	4	120	1				
150A	-	-	150	1	150	1	150	1	300	2	150	1	300	2	450	3	150	1				
200A	-	-	200	1	200	1	200	1	200	1	200	1	200	1	400	2	200	1				
240A	-	-	-	-	240	1	200	1	240	1	240	1	240	1	480	2	240	1				
250A	-	-	-	-	250	1	200	1	250	1	250	1	250	1	500	2	250	1				
300A	-	-	-	-	300	1	200	1	300	1	300	1	300	1	600	2	300	1	300	1		
400A	-	-	-	-	-	-	-	-	-	-	400	1	400	1	400	1	400	1	400	1	400	1
500A	-	-	-	-	-	-	-	-	-	-	500	1	500	1	500	1	500	1	500	1	500	1
600A	-	-	-	-	-	-	-	-	-	-	600	1	600	1	600	1	600	1	600	1	600	1
750A	-	-	-	-	-	-	-	-	-	-	750	1	750	1	750	1	750	1	750	1	750	1
800A	-	-	-	-	-	-	-	-	-	-	800	1	800	1	800	1	800	1	800	1	800	1
1000A	-	-	-	-	-	-	-	-	-	-	-	-	-	-	-	1000	1	1000	1	1000	1	
1200A	-	-	-	-	-	-	-	-	-	-	-	-	-	-	-	1200	1	1200	1	1200	1	
1500A	-	-	-	-	-	-	-	-	-	-	-	-	-	-	-	1500	1	1500	1	1500	1	

WINDING TYPE (권선형) CURRENT TRANSFORMER



계기용변성기

0.72~1.2kV (5~30A)



● Specifications

- Winding type
- Maximum voltage : 0.72~1.2kV
- Over current strength : $40I_n/1\text{sec.}$
- Frequency : 50Hz or 60Hz

● Features

- Protect cover
- Easy to install panel mounting kit

● Single Ratio Type

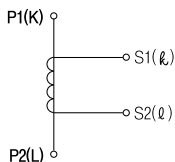
Model	Primary (A)	Secondary (A)	Burden (VA)	Class (%)	Weight (kg)
WYCW-15	5~30	5 or 1	15	1.0	≒0.7

● Double Ratio Type

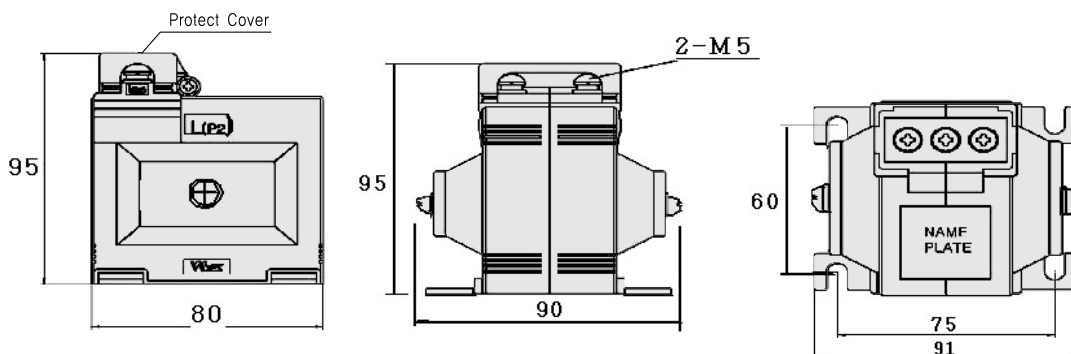
Model	Primary (A)	Secondary (A)	Burden (VA)	Class (%)	Weight (kg)
WYCW-15D	10~30 (5~15)	5 or 1	15	1.0	≒0.7

※ Apply rated current burden to $\frac{1}{2}$ tap

• Connection Diagram



● Illustration & Drawing



트
랜
스
포
머

노
이즈
컷
스
트
랜
스

무
선
접
촉
릴
레이

전
력
조
정
기

스
미
칭
파
워

노
이즈
필
터

고
조
파
필
터

서
지
보
호
기

보
호
계
전
기

누
전
경
보
기

자
랑
계
전
기

영
상
변
류
기

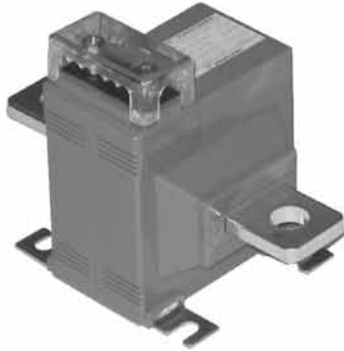
지
시
전
기
계
기

계
기
용
변
성
기

F
팬

WINDING TYPE (권선형) CURRENT TRANSFORMER

0.72~1.2kV (5~500A)



● Specifications

- busbar type
- Maximum voltage : 0.72~1.2kV
- Over current strength : 40In/1sec.
- Frequency : 50Hz or 60Hz
- Case : Poly carbonate (PC)

● Features

- Protect cover
- Easy to install panel mounting kit

● Single Ratio Type

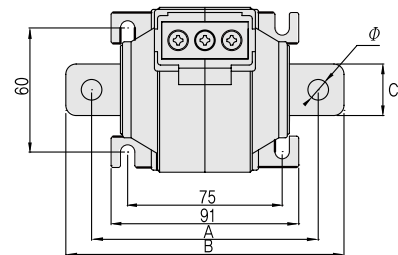
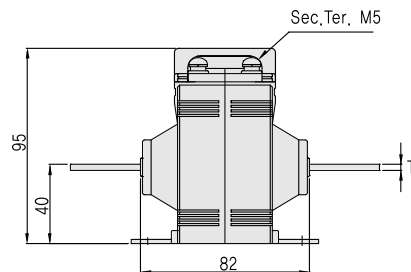
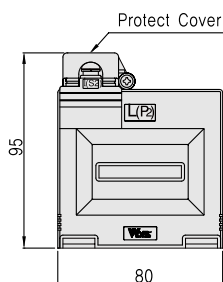
Model	Primary (A)	Secondary (A)	Burden (VA)	Class (%)	Weight (kg)
WYCB-151	5~150	5 or 1	5~15	1.0	≒0.5
WYCB-152	200~300				≒0.6
WYCB-153	400~500				≒0.7

● Double Ratio Type

Model	Primary (A)	Secondary (A)	Burden (VA)	Class (%)	Weight (kg)
WYCB-151D	10~150 (5~75)	5 or 1	5~15	1.0	≒0.5
WYCB-152D	200~300 (100~150)				≒0.6
WYCB-153D	400~500 (200~250)				≒0.7

※ Apply rated current burden to $\phi 1$ tap

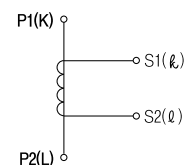
● Illustration & Drawing



● Dimension

Model	A	B	C	T	∅
WYCB-151/151D	110	135	25	3	10
WYCB-152/152D	115	145	30	6	13
WYCB-153/153D	120	150	40	8	13

● Connection Diagram



PANEL INSTALLING TYPE (부스바 및 케이블관통형) CURRENT TRANSFORMER

0.72~1.2kV (400~2000A)



● Specifications

- Square type C.T(Panel installing type)
- Maximum voltage : 0.72~1.2kV
- Over current strength : 40In/1sec.
- Frequency : 50Hz or 60Hz
- Case : Poly carbonate (PC)

● Features

- Protect cover
- Easy to install panel mounting kit

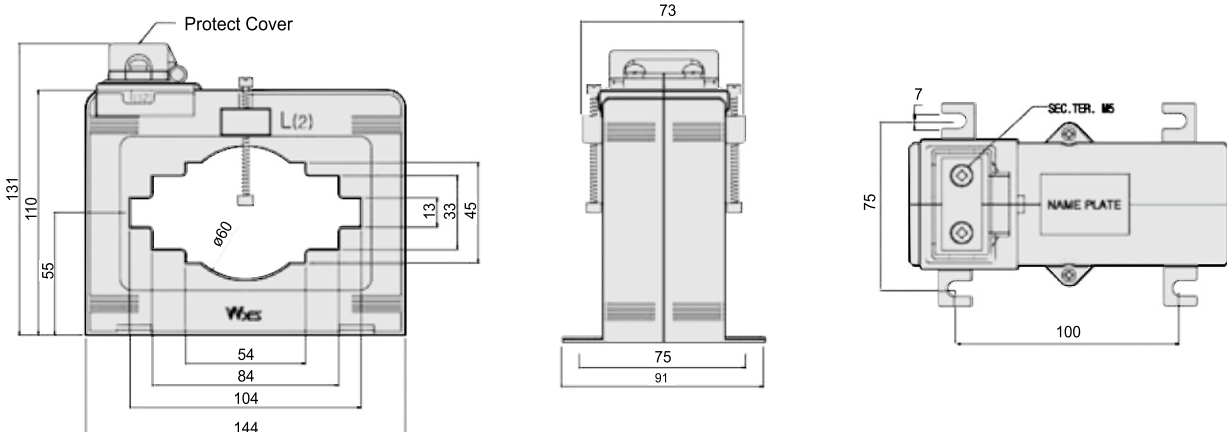
● Single Ratio Type

Model	Primary (A)	Secondary (A)	Burden (VA)	Class (%)	Weight (kg)
WYCS-105	400~2000	5 or 1	15	1.0	≒1.2

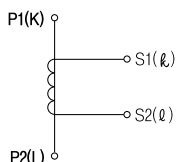
● Double Ratio Type

Model	Primary (A)	Secondary (A)	Burden (VA)	Class (%)	Weight (kg)
WYCS-105D	800/400	5 or 1	15	1.0	≒1.2
	1000/500				
	1200/600				
	1500/750				
	2000/1000				

● Illustration & Drawing



● Connection Diagram



T
R
A
N
S
F
O
R
M
E
R

N
O
I
Z
E
S
H
I
E
L
D
I
N
G

S
S
R

T
P
R

S
M
P
L
E

N
/
F

H
/
F

S
P
D

R
E
L
A
Y

E
L
D

G
F
R

Z
C
T

M
E
T
E
R

C
T
/
V
T

F
A
N

BUS-BAR INSTALLING TYPE (부스바 관통형) CURRENT TRANSFORMER

0.72~1.2kV (100~4000A)



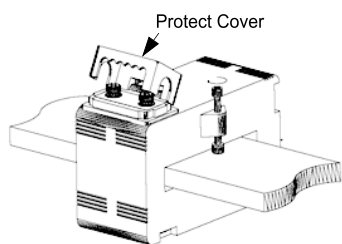
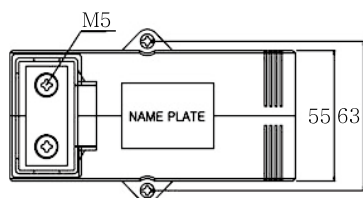
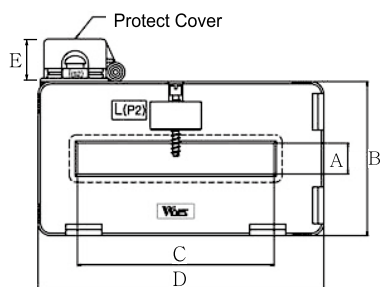
● Specifications

- Square type C,T(Busbar installing type)
- Maximum voltage : 0,72~1,2kV
- Over current strength : 40In/1sec.
- Frequency : 50Hz or 60Hz
- Case : Poly carbonate (PC)

● Features

- Protect cover
- Easy to install panel mounting kit

● Illustration & Drawing



● Single Ratio Type

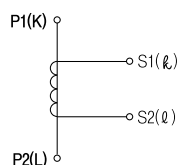
Model	Primary (A)	Secondary (A)	Burden (VA)	Class (%)	Weight (kg)		
WYCS-44	100	5 or 1	15	1.0	≒0,9		
	150~200						
	250~300						
	300						
WYCS-65	400	5 or 1	15	1.0	≒0,7		
500~600							
WYCS-85	600~1200	5 or 1	15	1.0	≒0,8		
WYCS-104	1200~2000						
WYCS-130	1200~3000		15 or 40			1.0	≒2,0
WYCS-160	2500~4000						

● Double Ratio Type

Model	Primary (A)	Secondary (A)	Burden (VA)	Class (%)	Weight (kg)
WYCS-44D	200/100	5 or 1	5	1.0	≒0,9
	300/150		5 or 15		
WYCS-65D	400/200	5 or 1	15	1.0	≒0,7
	500/250		15		
WYCS-85D	600/300	5 or 1	15	1.0	≒0,8
	800/400		15		
WYCS-104D	1000/500	5 or 1	15	1.0	≒1,8
	1200/600		15		
WYCS-130D	2000/1000	5 or 1	15	1.0	≒2,0
	1200/600		15 or 40		
WYCS-160D	3000/1500	5 or 1	15	1.0	≒3,6
	2000/1000		15 or 40		
WYCS-160D	3000/1500	5 or 1	15 or 40	1.0	≒3,6
	4000/2000		15 or 40		

※ Apply rated current burden to 1 tap

● Connection Diagram



● Dimension

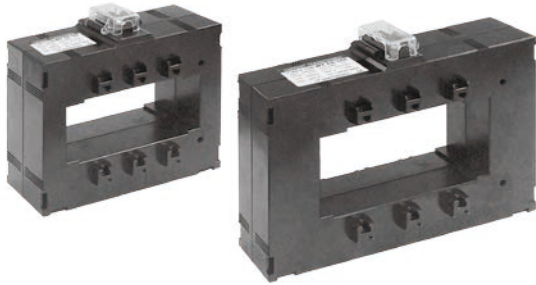
Model	A	B	C	D	E
WYCS-44	11	60	44	97	18
WYCS-65	11	65	65	124	18
WYCS-85	13	65	85	124	18
WYCS-104	30	102	104	170	21
WYCS-130	40	112	130	208	21
WYCS-160	65	153	160	246	21

METERING TYPE (부스바 관통형) CURRENT TRANSFORMER



계기용변성기

0.72~1.2kV (3000~6 000A)



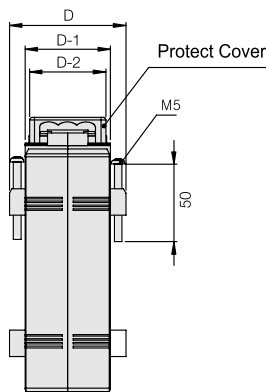
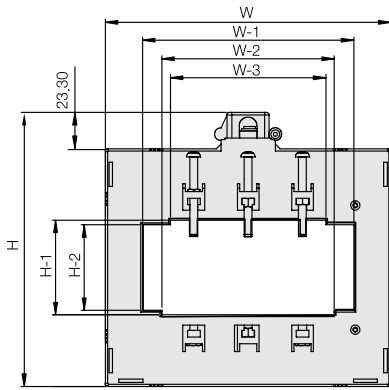
● Specifications

- Square type C,T(Busbar installing type)
- Maximum voltage : 0,72~1,2kV
- Over current strength : 40In/1sec.
- Frequency : 50Hz or 60Hz
- Case : Poly carbonate (PC)

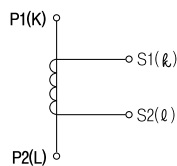
● Features

- Protect cover
- Easy to install panel mounting kit

● Illustration & Drawing



• Connection Diagram



● Single Ratio Type

Model	Primary (A)	Secondary (A)	Burden (VA)	Class (%)	Weight (kg)
WYCS-135	2500	5 or 1	15, 40	0,5 or 1	≒3,2
	3000				
	3200				
	3500				
	4000				
WYCS-165	2500				≒3,8
	3000				
	3200				
	3500				
	4000				
	6000	≒4,1			

● Dimension

Model	W	W-1	W-2	W-3	H	H-1	H-2	D	D-1	D-2
WYCS-135	184	136	111	100	153	61	55	75	55	49
WYCS-165	255	160	136	110	175	79	76	75	55	49

트랜스포머

노이즈컷트랜스

무선접점릴레이

전력조정기

스미칭파워

노이즈필터

고조파필터

서지보호기

보호계전기

누전경보기

지락계전기

영상변류기

지시전기계기

계기용변성기

FAN

PROTECTION RELAY TYPE (부스바관통형 / 보호계전기용) CURRENT TRANSFORMER

0.72~1.2kV (120~2000A)



● Specifications

- Square type C.T(Panel installing type)
- Maximum voltage : 0.72~1.2kV
- Over current strength : 40In/1sec.
- Frequency : 50Hz or 60Hz
- Case : Poly carbonate (PC)

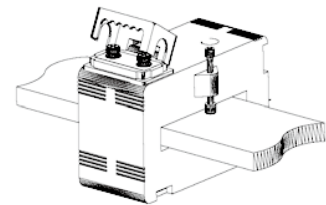
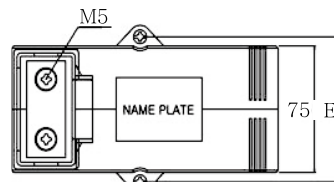
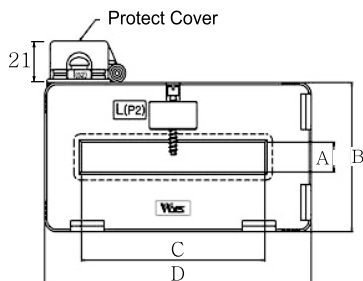
● Features

- Protect cover
- Easy to install panel mounting kit

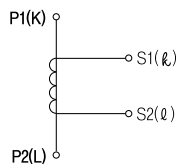
● Single Ratio Type

Model	Primary (A)	Class (%)	Burden (VA)	n >	Weight (kg)
WYCS-64R	150~350	5P (IEC)	5	10	≒3.3
	400~800/5		5	15	≒2.2
			15	10	
WYCS-104R	750~1200/5		5/15	10, 15	≒3.3

● Illustration & Drawing



• Connection Diagram



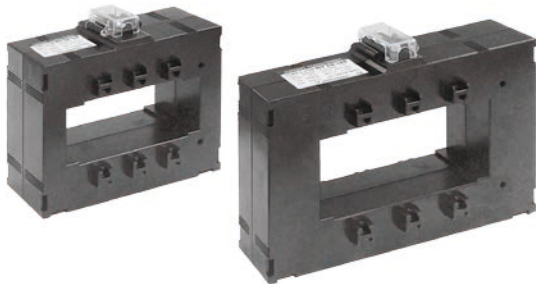
● Dimension

(mm)

Model	A	B	C	D	E
WYCS-64R	12	91	64	140	87
WYCS-104R	25	97	104	170	87

PROTECTION RELAY TYPE (부스바관통형/보호계전기용) CURRENT TRANSFORMER

0.72~1.2kV (3000~6000A)



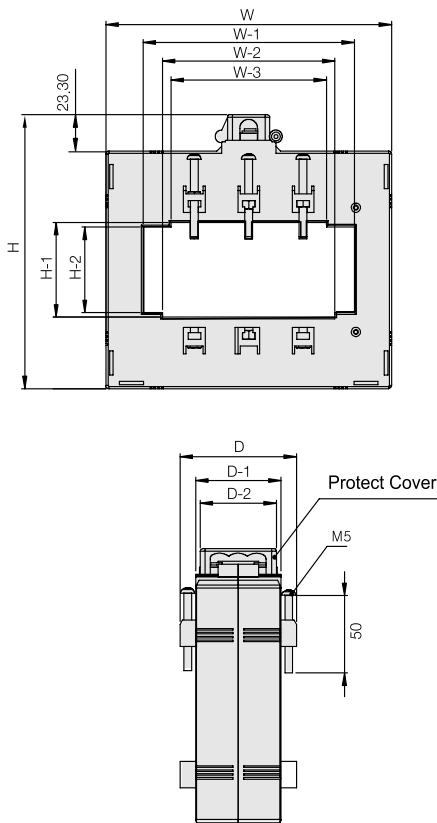
● Specifications

- Square type C,T(Busbar installing type)
- Maximum voltage : 0,72~1,2kV
- Over current strength : 40In/1sec.
- Frequency : 50Hz or 60Hz
- Case : Poly carbonate (PC)

● Features

- Protect cover
- Easy to install panel mounting kit

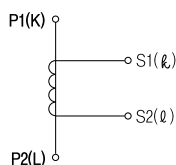
● Illustration & Drawing



● Single Ratio Type

Model	Primary (A)	Secondary (A)	Burden (VA)	n >	Class (%)	Weight (kg)		
WYCS-135R	2500	5 or 1	10	5P10	0,5 or 1	≈3,2		
	3000							
	3200							
	3500							
WYCS-137R	2500		40	15			5P10	≈3,6
	3000						5P20	
	3200			10			5P10	
	3500							
4000	≈3,8							
5000								
6000			≈4,1					
6000								
WYCS-165R	2500	40	15	5P10	≈4,0			
	3000							
	3200							
	3500		≈4,5					
	4000							
	5000							
WYCS-167R	2500	15	5P10	5P20	≈4,5			
	3000							
	3200							
	3500							
	4000							
	6000							

● Connection Diagram



● Dimension

Model	W	W-1	W-2	W-3	H	H-1	H-2	D	D-1	D-2
WYCS-135R	184	136	111	100	153	61	55	75	55	49
WYCS-137R	184	136	111	100	153	61	55	95	75	49
WYCS-165R	255	160	136	110	175	79	76	75	55	49
WYCS-167R	255	160	136	110	175	79	76	95	75	49

트랜스포머

노이즈컷트랜스

무선전압릴레이

전력조정기

스미칭파워

노이즈필터

고조파필터

서지보호기

보호계전기

누전경보기

차량계전기

영상변류기

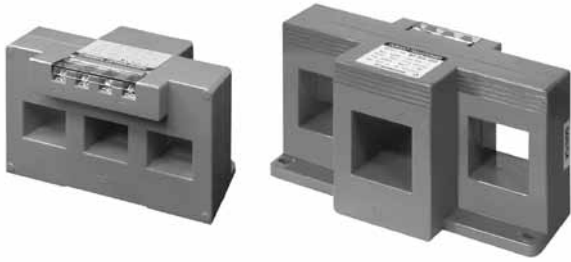
지시전기계기

계기용변성기

FAN

3PHASE INSTALLING TYPE (3상 일체형) CURRENT TRANSFORMER

0.72~1.2kV (50~1000A)



● Features

- 3Phase all in one type
- MCCB mixing type
- Square type C,T(Busbar & Cable installing type)
- Maximum voltage : 1150V
- Over current strength : 40In/1sec.
- Frequency : 50Hz or 60Hz
- Secondary current : 5A
- Case : Poly carbonate (PC)

● Specifications

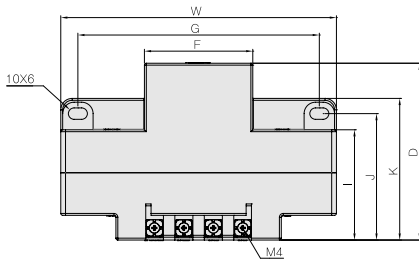
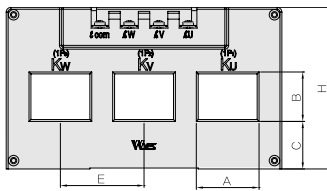
· 2CT Type

Model	MCCB	CT (INPUT)	Primary (A)	Secondary (A)	Class (%)	Burden (VA)	Weight (kg)
WY3CS-162	125AF	2CT TYPE	50~75A	5A	3,0	5	0,8
			100A		1,0/3,0	5/15	
WY3CS-262	250AF	2CT TYPE	120~150A		1,0/3,0	5/15	1,1
			200~300A				
WY3CS-312	400AF	2CT TYPE	250~500A		1,0	15	1,2
WY3CS-462	630AF	2CT TYPE	500~1000A		1,0	15	2,0
	800AF						

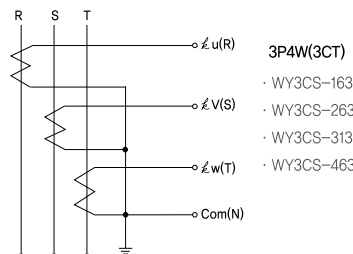
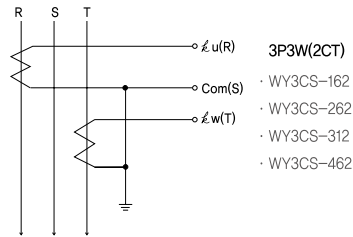
· 3CT Type

Model	MCCB	CT (INPUT)	Primary (A)	Secondary (A)	Class (%)	Burden (VA)	Weight (kg)
WY3CS-163	125AF	3CT TYPE	50~75A	5A	3,0	5	0,9
			100A		1,0/3,0	5/15	
WY3CS-263	250AF	3CT TYPE	120~150A		1,0/3,0	5/15	1,2
			200~300A				
WY3CS-313	400AF	3CT TYPE	250~500A		1,0	15	1,4
WY3CS-463	630AF	3CT TYPE	500~1000A		1,0	15	2,2
	800AF						

● Illustration & Drawin



● Connection Diagram



Unit : (mm)

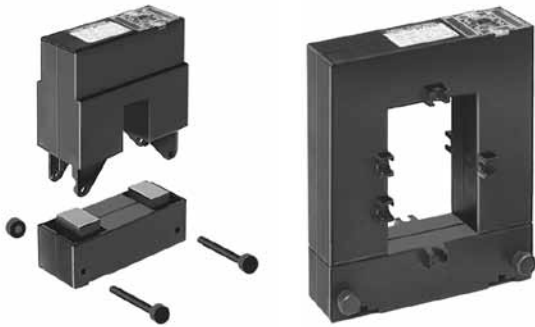
Model	W	H	D	A	B	C	E	F	G	I	J	K
WY3CS-162	104	60	126,5	16	14	19,5	30	44	86	75,5	84	92
WY3CS-163												
WY3CS-262	115	60	126,5	26	21	17,5	35	47	97	75,5	84	92
WY3CS-263												
WY3CS-312	145	85	93	31	24	26	44	57	127	58	66,5	74,5
WY3CS-313												
WY3CS-462	215	95	85	46	32	30	70	77	197	51,5	58,5	66,5
WY3CS-463												

SPLIT TYPE (분할형) CURRENT TRANSFORMER



계기용변성기

0.72kV (50~5000A)



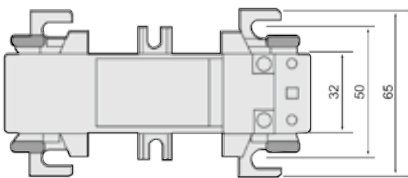
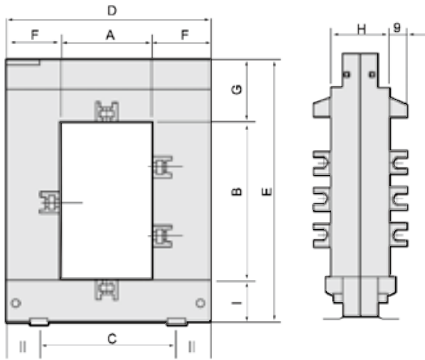
● Specifications

- Split Core Type
- Maximum voltage : 0.72kV
- Withstand : 3kV/1min
- Frequency : 50Hz or 60Hz

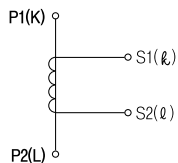
● Features

- Protect cover
- Easy to install panel mounting kit

● Illustration & Drawing



● Connection Diagram



● Single Ratio Type

Model	Primary (A)	Secondary (A)	Burden(VA)
			Class 1,0
WYSC-23	100~200	1, 5	1,25
	250		2
	300		3,75
	400		5
WYSC-58	250	1, 5	2
	300~400		3
	500~800		5
	1000		10
WYSC-88	250	1, 5	3,75
	300		5
	400		10
	500~800		15
	1000~2000		20
WYSC-812	500	1, 5	10
	600~800		15
	1000		20
	1200~1250		25
	1500~3000		30
WYSC-816	1000	1, 5	20
	1500~2500		25
	3000~5000		30

● Dimension

Model	A	B	C	D	E	F	G	H	I	Weight(Kg)
WYSC-23	20	30	51	89	111	34	47	40	32	0,75
WYSC-58	50	80	78	114	145	32	32	32	33	0,9
WYSC-88	80	80	108	144	145	32	32	32	33	1,05
WYSC-812	80	120	108	144	185	32	32	32	33	1,25
WYSC-816	80	160	120	184	245	52	52	52	38	4,3

T
R
A
N
S

노
이즈
컷
트
랜
스

무
선
접
촉
릴
레이

전
력
조
정
기

스
미
칭
파
워

노
이즈
필
터

고
조
파
필
터

서
지
보
호
기

보
호
계
전
기

누
전
경
보
기

자
량
계
전
기

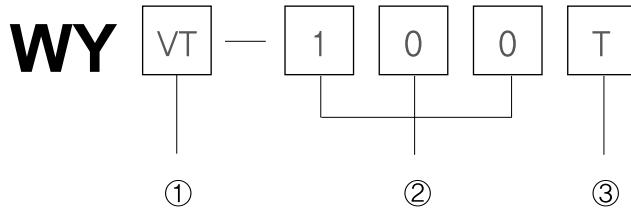
영
상
변
류
기

지
시
전
기
계
기

계
기
용
변
성
기

F
A
N

● Type Information



● General Specifications

- Metering or Protection Relay
- Indoor type
- Case : Poly carbonate (PC)

① Kind

VT	Voltage Transformer (1Phase)
EVT	Earthed Voltage Transformer (1Phase)
3VT	Voltage Transformer (3Phase)
3EVT	Earthed Voltage Transformer (3Phase)

② Burden (VA)

50,100,200	VT
50,100	EVT
50(25×2)	3VT
50(16×3)	3EVT

③ Line Part

F	Fuse	
TF	Tertiary & Fuse	
V	Line to Line V,T (3P3W)	3VT
Y	Line to Earth V,T (3P4W)	3EVT

VT-50



3VT-50 □

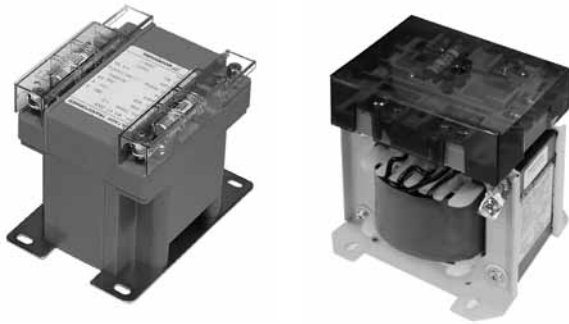


● Rated Voltage

Item	Primary Voltage(V)	Secondary Voltage(V)	Tertiary Voltage(V)	
VT	WY3VT	110 ~ 600	110	-
EVT	WY3EVT-Y	110/√3 ~ 480/√3	110/√3 or 190/√3	190/3V or 110/3
		the other (by specified)	110/√3 or 190/√3	190/3V or 110/3

VOLTAGE TRANSFORMER (VT)

0.72~1.15kV (50~500VA)



● Specifications

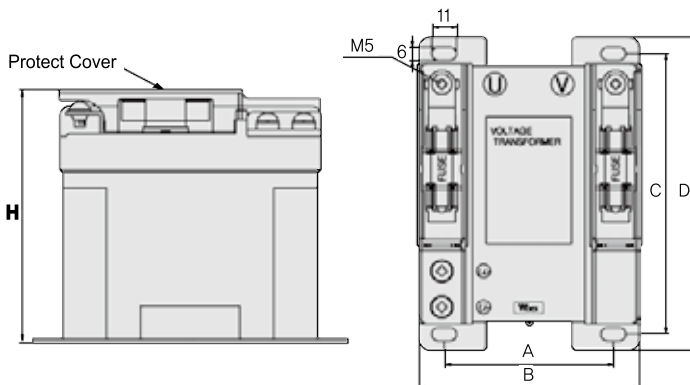
- Maximum voltage : 0.72~1.15kV
- Frequency : 60Hz (standard) 50/60Hz
(by specified) classification
- Over voltage factor : 1.2Vn (KS C IEC60044-2)
- Fuse : AC500V (MAX) 10,3×38mm

Model	Rated Voltage(V)		Class (%)	Rated Burden (VA)	Fuze (A)	Weight (kg)
	1'st	2'nd				
WYVT-50F	110 ~ 600	110 or 220	1.0	50	2A	≒2.5
WYVT-100F				100		≒4.0
WYVT-200F				200		≒5.0
WYVT-300F				300		≒5.7
WYVT-500F				500		≒6.3

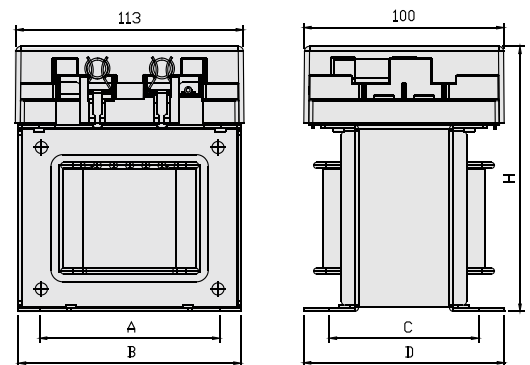
※ Type "F" : Fuse in type

● Illustration & Drawing

Type : A



Type : B

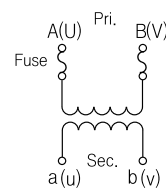


● Dimension

unit(mm)

Model	A	B	C	D	H	Type
WYVT-50F	75	98	125	140	110	A
WYVT-100F	85	108	125	140	110	
WYVT-200F	95	113	125	140	123	
WYVT-300F	98	142	111	133	160	B
WYVT-500F	98	142	116	138	160	

● Connection Diagram



트랜스포머

노이즈컷트슬랜스

무선접점릴레이

전력조정기

스위칭파워

노이즈필터

고조파필터

서지보호기

보호계전기

누전경보기

지락계전기

영상변류기

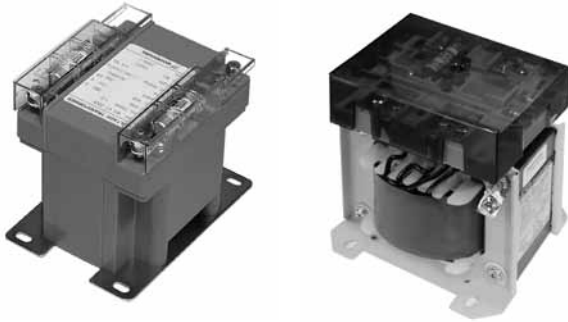
지시계기

계기용변성기

FAN

EARTHED TYPE VOLTAGE TRANSFORMER (EVT)

0.72~1.15kV (50~500VA)



● Specifications

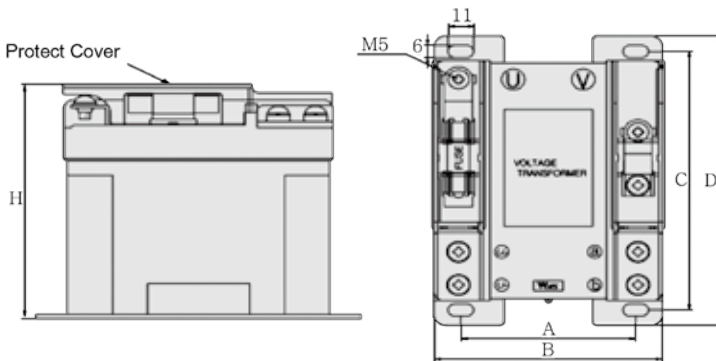
- Maximum voltage : 0.72~1.15kV
- Frequency : 60Hz (standard) 50/60Hz
(by specified) classification
- Over voltage factor :
1.2Vn Cont. / 1.9Vn 30s (KS C IEC60044-2)
- Fuse : AC500V (MAX) 10.3×38mm

Model	Rated Voltage(V)			Class(%) 2'st/3'ry	Rated Burden(VA) 2'nd/3'ry	Fuze (A)	Weight (kg)
	1'st	2'nd	3'ry.				
WYEVT-50F	110/√3~480/√3	110/√3 or 190/√3	-	1.0	50	2	≒3.0
WYEVT-100F					100		≒4.0
WYEVT-200F					200		≒4.0
WYEVT-300F					300		≒5.0
WYEVT-500F					500		≒5.5
WYEVT-25TF	110/√3~480/√3	110/√3 or 190/√3	110/3 or 190/3	1.0/3.0	25/50	2	≒4.0
WYEVT-50TF					50/100		≒5.0
WYEVT-100TF					100/200		≒6.0
WYEVT-200TF					200/400 or 500		≒6.8

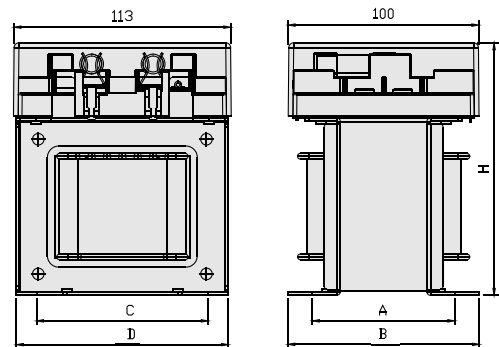
※ Type "F" : Fuse in type

● Illustration & Drawing

Type : A



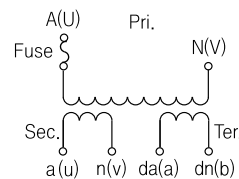
Type : B



● Dimension

Model	A	B	C	D	H	Type
WYEVT-50F WYEVT-25TF	75	98	125	140	110	A
WYEVT-100F WYEVT-50TF	85	108	125	140	110	
WYEVT-200F WYEVT-100TF	95	113	125	41	123	B
WYEVT-500F WYEVT-200TF	98	142	116	138	160	

• Connection Diagram



⚠ 주의

3차 권선의 Open Terminal 간 부담이 작게 되면 잔류 전압이 발생되어 계전기의 오동작이 될 수 있으므로 사용 부담은 정격 부담이 70~100%가 되도록 하여 주십시오.

⚠ Caution :

Please the rated burden have to be from 70 to 100%. If the burden between the Open Terminal and the Open Terminal at the third winding is low, it generates residual voltage.

3Ø VOLTAGE TRANSFORMER (3Ø VT)

0.72~1.15kV (16.6~25VA)



Specifications

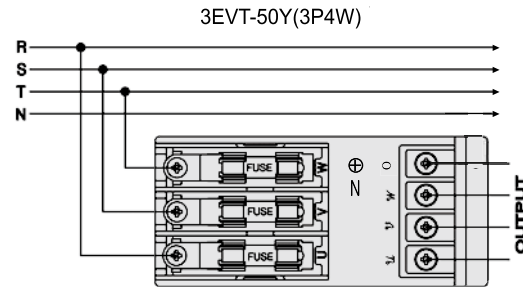
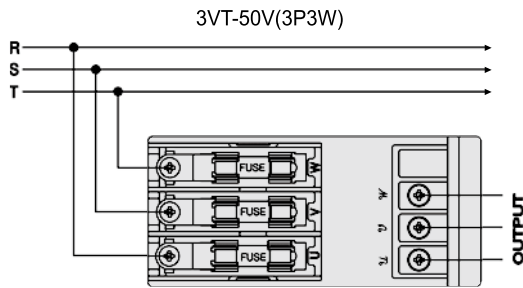
- Maximum voltage : 0.72~1.15kV
- Frequency : 60Hz (Standard) 50/60Hz
(by specified) classification
- Over voltage factor : 1.2Vn Conti. / 1.5Vn 30s
(KS C IEC60044-2)
- Fuse : AC500V, 1A(10.3×38mm)
- Phase : 3Phase

Model	Rated Voltage(V)		Class (%)	Rated Burden (VA)	Weight (kg)
	1'st	2'nd			
WY3VT-50V	110 ~ 600	110 ~ 220	1.0	25×2(50)	≒4.0
WY3EVT-50Y	380/√3	190/√3 ~ 110/√3		16×3(50)	≒4.5

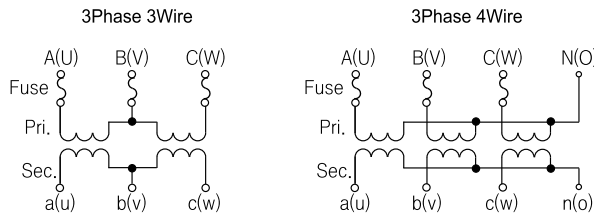
경고
지락사고시 건전상에서는 √3배 전압이 유기되어 본제품이 손상될 우려가 있으니 차단보호 장치가없는 경우는 1차측 N 접지 단자를 사용 하지 마십시오.

Caution :
It don't use the N earth terminal at primary if don't have the shutoff protection equipment. When ground accident , this product may be broken because it conducts times of voltage.

Connection



Connection Diagram



경고
※ 1차 N(접지)단자는 중선선에 연결하지 마십시오.
※ 본제품은 접지 보호장치가 없는 선로에서 접지사고 발생시 제품이 손상될수 있습니다.
접지보호 장치가 없을시 단상GPT를 조합하여 사용하는것이 효과적입니다.

Caution:
※ N(ground) terminal disconnects a neutral line.
※ When ground accident, this product may be broken at line without ground protection equipment.
When it don't have ground protection equipment, it is effective to use a combination of it and a single-phase GPT.

Illustration & Drawing

